

DOUBLE CLICK

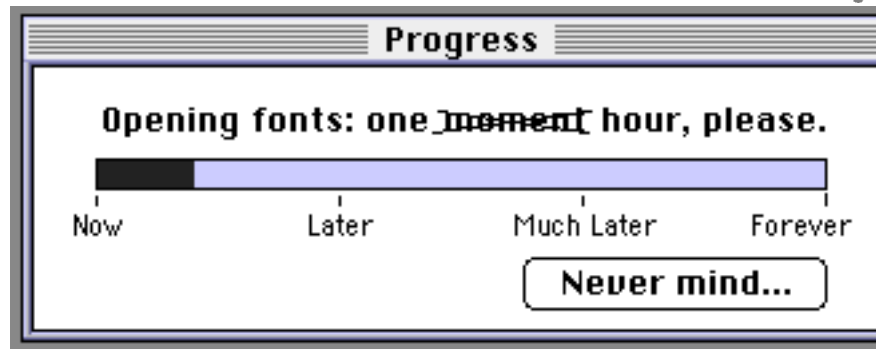
A Monthly Publication of Macintosh Users East (MaUse)



Fonts Management & Macromedia Fontographer 4.1



Adobe Type Manager® Deluxe 4.0



BBQ Party
Saturday, August 21st.

MaUse
Macintosh Users East



Contents

Fonts Management...Page 3
Brief Look at Programs...4,5 &6
Fontographer 4.1...8 & 9
BBQ Party Invitation...Page 10

Executive Contact List

Please feel free to contact any of the following individuals if you have comments or questions relating to Macintosh Users East or Macintosh computing in general.

<u>Position/Name</u>	<u>Phone#</u>
President Bruce Cameron	Hm: (905) 983-9205 Orono Email: bcameron@lis2000.net
Past President Hugh Amos	Bus: (905) 683-4760 Ajax Hm: (905) 683-4320
Vice-President Mark Fenton	Hm: (905) 430-8234 Email: fenton@idirect.com
Treasurer Membership Chairman Doug Kettle	Hm: (905) 683-3214 Ajax
Resource Librarian Michael Shaw	Hm:(905) 576-2097 Oshawa Email: mikeshaw@idirect.com
BBS Administrator Jim Foster	Hm: (905) 432-0921 Courtice Email: jfoster435@home.com
MaUsE BBS - The Source Courtice	(905) 404-6603 33,600bps (905) 404-9874 14,400bps
Special Events Chris Greaves	(705) 887-2508 Fenelon Falls Email: cgreaves@peterboro.net
Executive at Large John Field	Hm:905-885-8718
Mary McCarthy Greeter/Blithe Spirit	
MaUsE Message Line	(905) 433-0777

Double Click

Double Click Editor Michael Shaw	Hm: (905) 576-2097 Oshawa Email: mikeshaw@idirect.com FAX: 905-576-5527
Printing & Distribution Doug Kettle	Hm: (905) 683-3214 Ajax

From the Editor

This month's issue will very briefly touch upon a topic of vital concern to us all and a subject which brings out the procrastinator in all of us...namely the control and management of the fonts installed in our Macs. If anybody feels cheated because the topic previously promised for the August Double Click, namely Generic Icons, is conspicuously absent, I ask for your indulgence. Nobody submitted it yet. Expect it next month, in September, in our Y2K Special Edition.

To get this Fonts Issue done I had to install all of the programs discussed in it onto my old 68040 Quadra 950, (and they all performed flawlessly), except for Font Reserve Lite (good for 100 fonts or less) which I downloaded, freely, off their www.fontreserve.com web-site and then found to be for PPC only.(Rats).It really looks like an excellent program. The .Demo versions of Suitcase 3.0, FontBox 2.0.2, Fonts Manager 3.6.2, Master Juggler Pro, and TypeTamer 1.1.2 all came off the MacAddict #6 CD from February 1997. A demo of Fontographer 4.1, Macromedia's industrial - strength fonts design tool for those who want to modify existing fonts or create entirely new ones, is also on the same CD.

It has come to my attention that the more pictures I put into an Issue the better it is received by Club members so for this August Issue I have tried to put pictures on EVERY page. Shades of Dick and Jane.

The Double Click is produced in 11 point Palatino on a wickedly fast Macintosh IIfx computer, (with no less than one hundred and twenty-six other fonts installed but I'm going to do SOMETHING about taking control of those fonts just as soon as I finish this issue), by and for members of the Macintosh Users East, a group of young and old Macintosh computer users with old and young Macintosh computers. The venerable IIfx has recently received an organ transplant and now sports a SCSI-2 Quantum Fireball 540S internal hard drive and a 330 Meg SCSI external UltraDrive, which is why you are getting your copy of the Double Click so early. The Double Click also now has a FAX number, 905-576-5527, so you can send in your comments and contributions by FAX if you want to. The Double Click email address is the same as my own: mikeshaw@idirect.com

MaUsE Mailing Address

Macintosh Users East
419 King Street West
Oshawa Centre P.O.
P.O. Box # 30530
Oshawa, Ontario

Managing Your Fonts

Managing your fonts is one of the critical things that you simply **MUST** do to keep your Mac running fast & trouble-free. Unfortunately, like eating right & exercising regularly, it is one of those activities that gets postponed indefinitely by most of us. The reasons fonts get out of hand are various. Firstly, fonts are so easy to collect and install on a Mac. Another consideration is that fonts used to be hideously expensive but are now freely distributed by the dozens as freeware, or purchasable by the hundreds on CDs. And there are so many types of fonts...PostScript, TrueType & Bitmapped. And if you already have a hundred and seventy-three fonts installed a few more won't hurt, will they??? Unfortunately mixing different types of fonts in the same folder is a bad idea and, just like Printer Descriptions in your System Folder, (for printers you don't have) and Preferences (for applications and games long-ago deleted), fonts you no longer need or use that are still lurking in your Fonts Folder in your System Folder can increase the size of your System and slow your Mac to a crawl.

There are several solutions to the problem of Fonts. The cheapest solution is to stop collecting them and then delete the "cute" fonts that you have but don't use. Put them onto diskettes or floppies and print out a catalog so you'll remember what they look like. Or you could simply drag the little suckers from the Fonts Folder inside your System Folder to any location on your Hard Drive outside the System Folder...like the Trash.

After the trip to the dump the next step is to manage the fonts you have left over to make them accessible to the applications and programs that use them without being a burden to the programs that don't. We will look at three or four of the more popular programs that will help you make your fonts behave. No matter which Management tool you use there are some things you should do first to simplify your fonts and a couple of things to keep in mind:

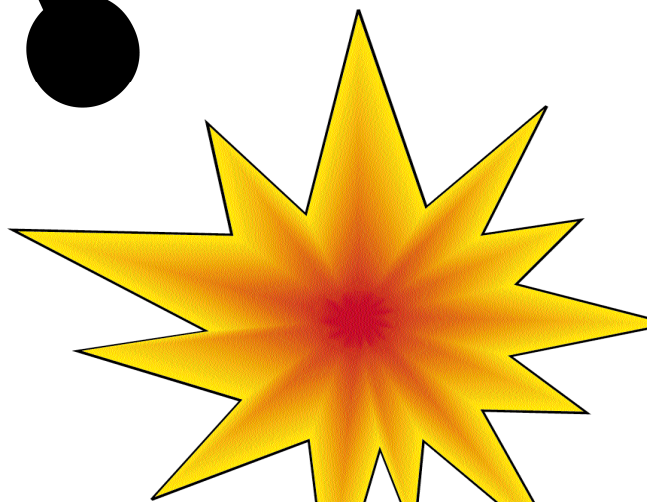
1. Organise your fonts into folders that realistically reflect the way you use them.
2. Don't force all your Fonts onto your StartUp drive unless you have to. The best feature of any of the Fonts Management tools is that they allow the fonts to be stored anywhere else your Mac can access, like out-

side your System Folder, on another partition of your Hard Drive or on an external drive.

3. Only keep open the Fonts you intend to use.
4. Many fonts management programs operate through extensions, so starting up with all extensions disabled will prevent font management from loading. To get around this create a Conflict Catcher or Extensions Manager set that will turn off all extensions EXCEPT your fonts management extensions and use it for those "Restart with extensions disabled" situations.
5. Try not to yank fonts out from under the applications that use them. Make sure to quit all running applications before you make any changes to font sets.
6. Don't mix and match in your Fonts Folder. Putting a bunch of GX, PostScript, Bitmapped and TrueType fonts in the same folder is just asking for trouble.
7. Although thousands of fonts are available for free, many are not worth having. In other words, you get what you pay for. Freeware, shareware and commercial fonts foundries are your sources of fonts. If you want good cheap fonts try shareware, (and don't forget to send in the shareware fees). If you need the highest quality fonts available try the font vendors on the internet: Bitstream at (www.bitstream.com), the Adobe folks at (www.adobe.com), Emigre at their internet site (www.emigre.com), and Letraset at (www.letraset.com)

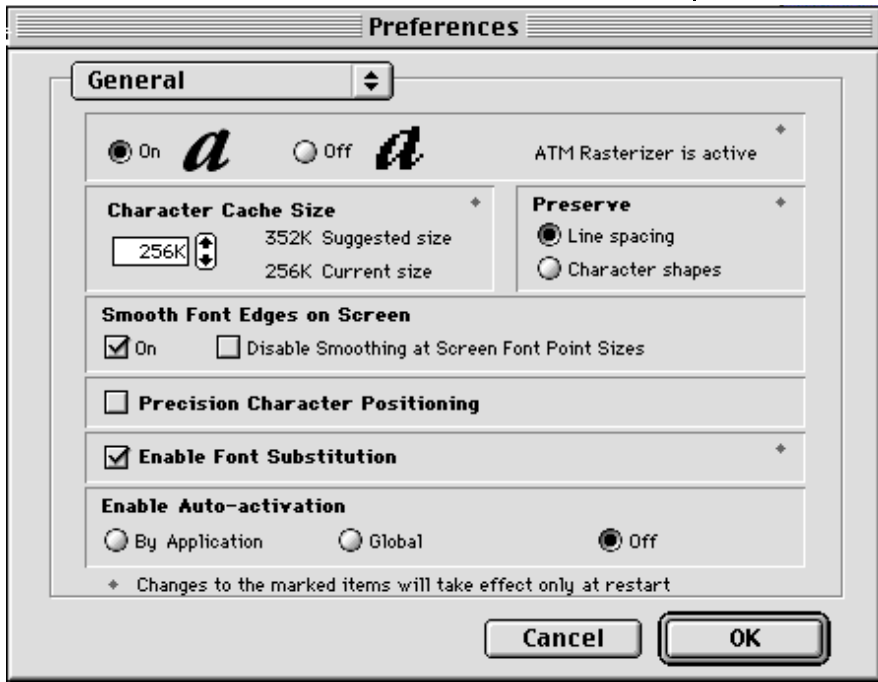


8. If you use too many fonts on a single page your Mac will probably explode.
Don't let this happen to you !!!



Adobe Type Manager Deluxe 4.0

(ATM), will list all of your installed fonts, indicating which are active and inactive, (see below), and also list the Sets of fonts you have created to work in specific applications.



In the Known Fonts window fonts can be enabled and disabled in the check-mark column. The Sets tab displays the Sets and their contents. The Fonts tab displays the number of fonts in each Suitcase. The Activate and Deactivate buttons turn selected fonts and sets on and off. The plus signs in the bottom right corner will allow the addition of a folder full of fonts or a font suitcase to the list of fonts.

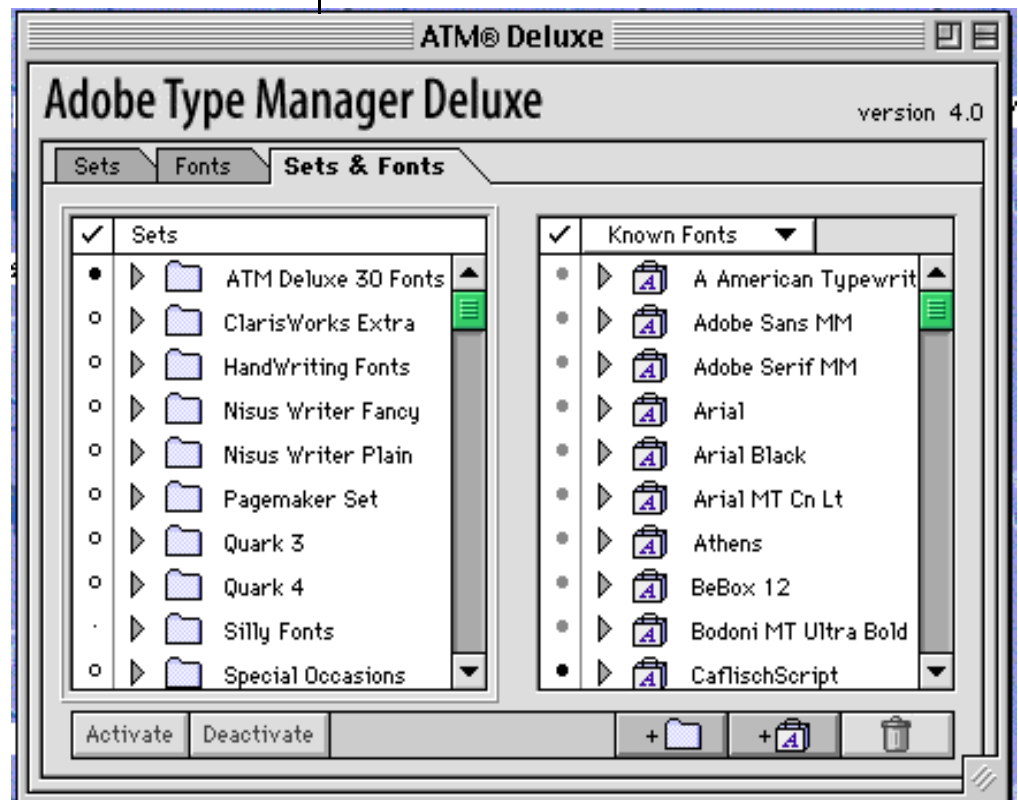
ATM is simple to set up and use and has a straightforward interface that is easy to work with. Once configured it works invisibly behind your applications to ensure that only the fonts you intend to use get loaded

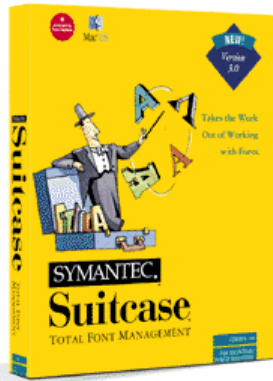
This type managing utility has the fonts management tools also present in the other utilities plus one very powerful anti-aliased screen fonts tool which has the ability to control how we use and view fonts on-screen. Blocky and jagged letters become smooth more-easily read text on screen and the appearance of text is improved to resemble what will appear when the font is to be printed. This makes screen text easier to read and gives a more polished look to screened documents. Other features of the ATM Control Panel let you set your priorities for how your type will appear and allow the program to automatically replace fonts you don't have with fonts you do in order to permit documents you receive to appear normally.

with your programs.

ATM requires System 7.0.1 or better and 8 MB of RAM.

Adobe Type Manager,

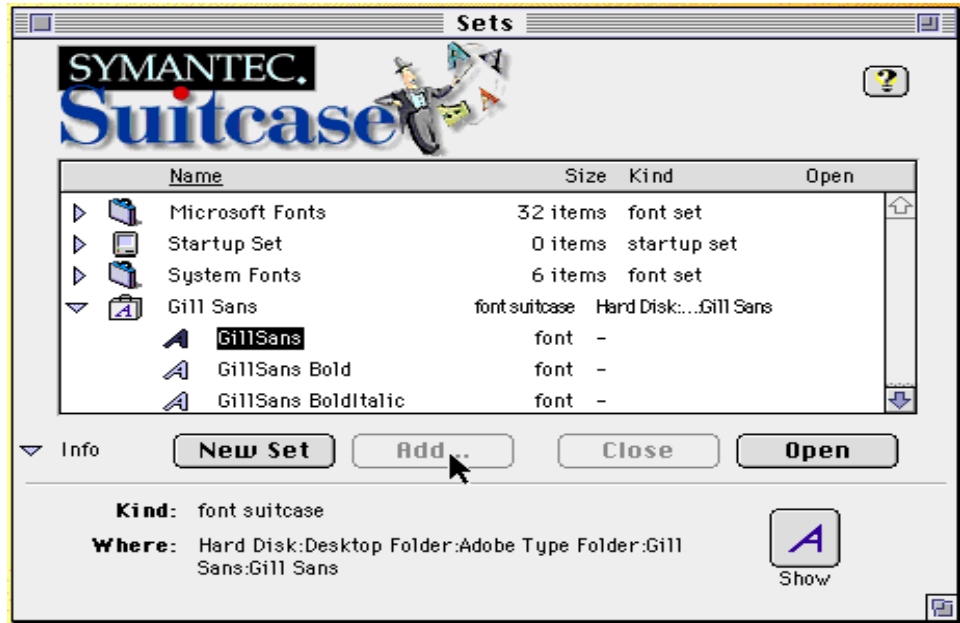




Suitcase 3

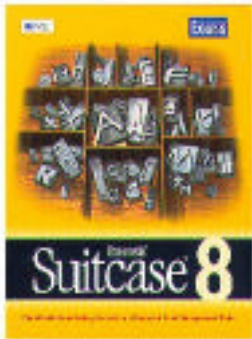
Suitcase lacks some of the features of ATM but it does have others. One of them is the ability to compress fonts up to 60% and then decompress them invisibly when they are called upon. Suitcase will also show a sample of the selected font, a very useful tool when your Mac gets so many fonts in it that you simply can't remember what each of them looks like. Fonts can be organised by size, family and project if desired and new fonts can be installed and organised on the fly, without the necessity of dragging them to the System Folder and restarting your Mac.

To speed up program

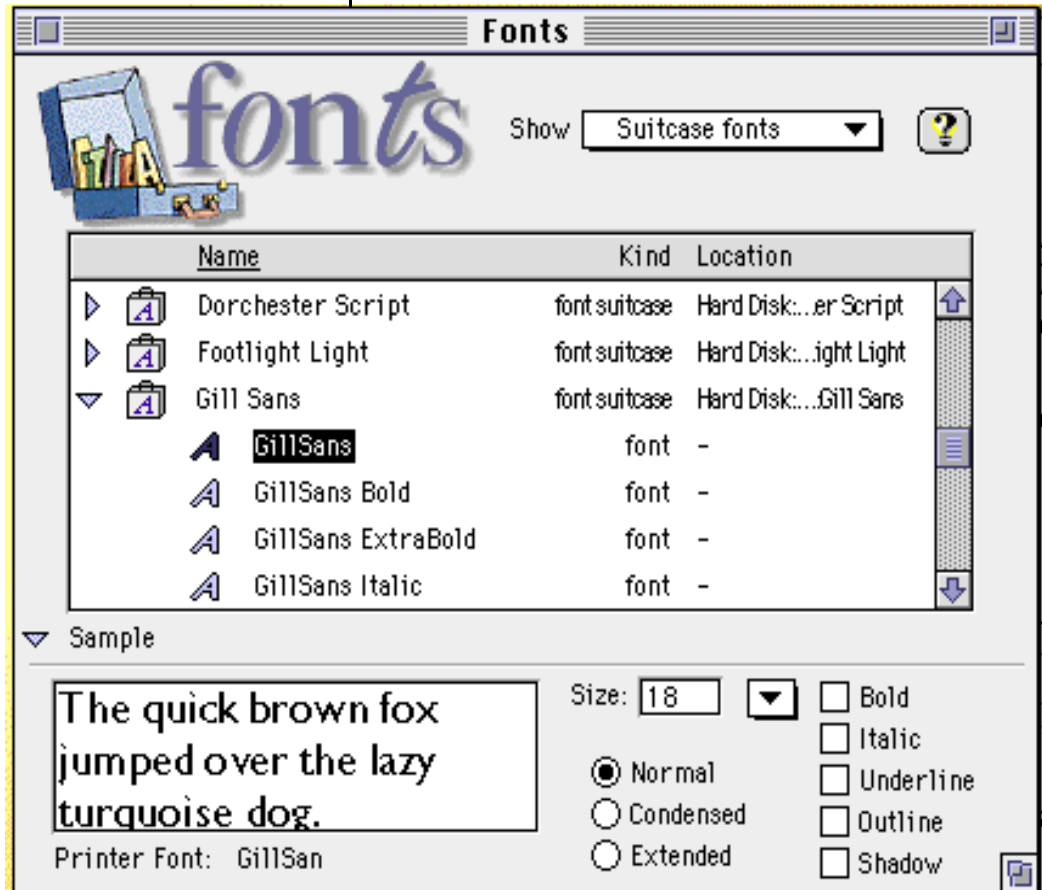


help you choose among them they are each displayed from the Fonts Menu of the application in their own script.

Suitcase can automatically resolve font conflicts as new fonts are loaded into the System. Fonts are harmonised to put an end to font ID number conflicts. Older versions of Suitcase are from Symantec but the newest version is Extensis Suitcase 8



launching a set of fonts for each application can be created simply by dragging the application icon into the suitcase window. to create a program-specific set. Only the fonts dragged to the application's icon will be loaded when the application is launched. To



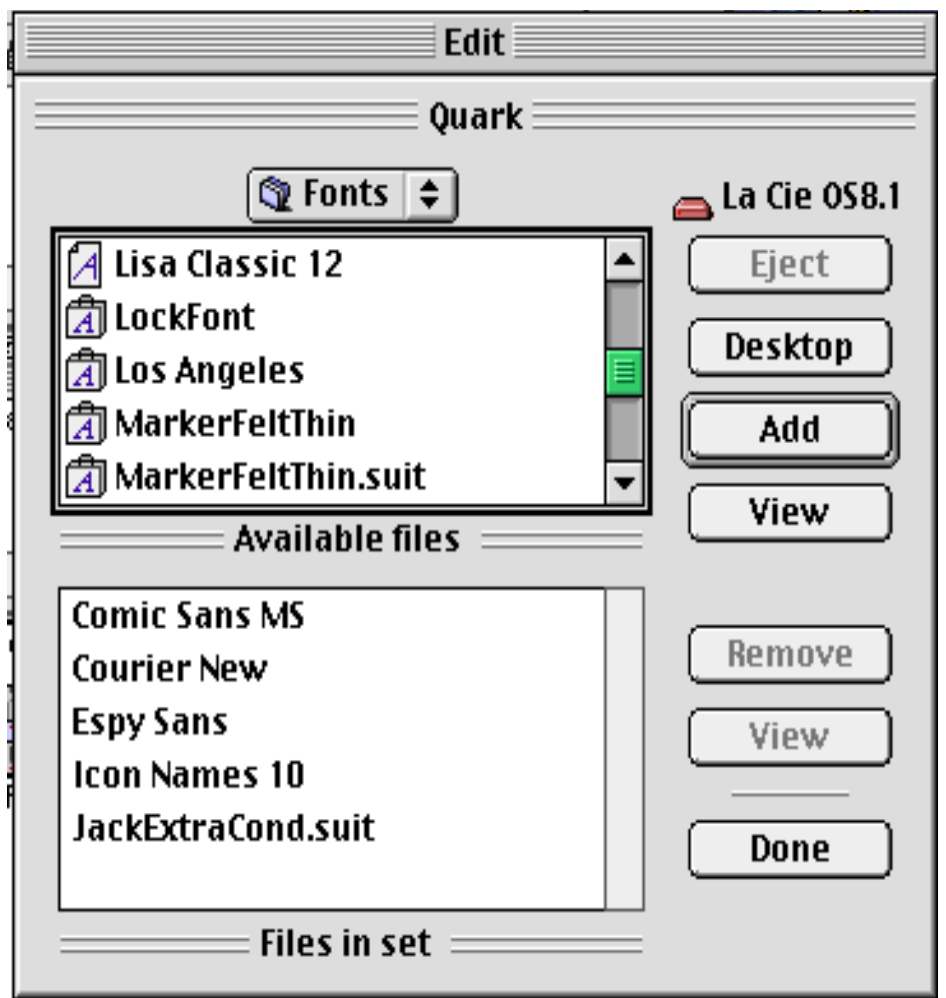
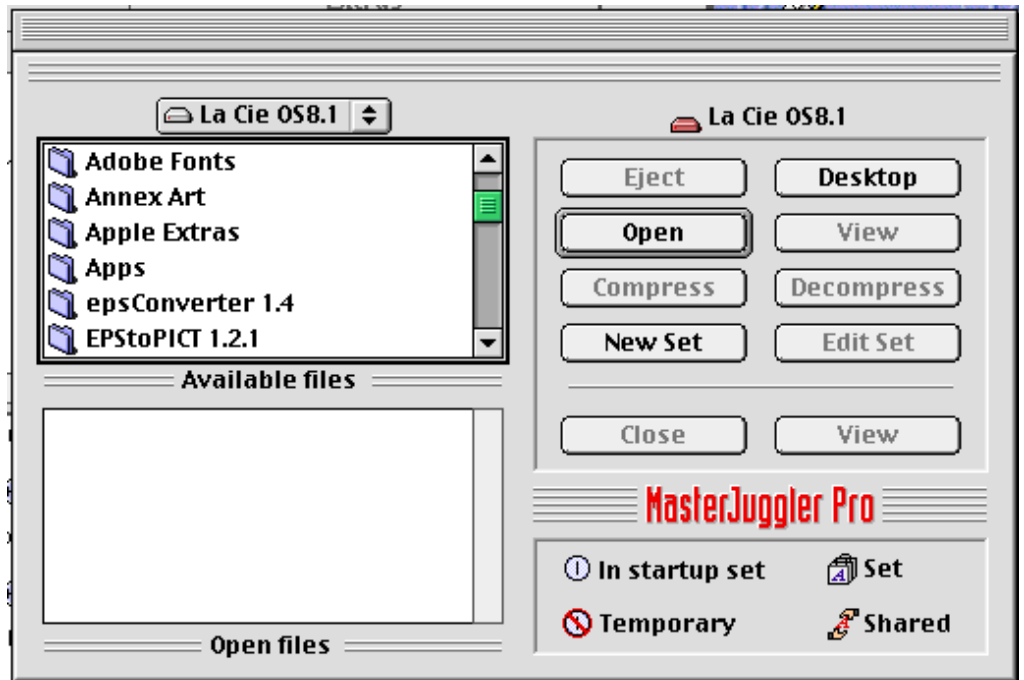


Master Juggler

Master Juggler, like Suitcase, has a compression utility built into it that will make life a lot simpler for users with limited drive space and an overactive desire or need for fonts. The interface is easy to work with (see above), and the requirements are fairly modest: 1 MB of RAM and System 7.1.

Use the Open button to find and create font suitcases. The New Set button allows you to create new sets of fonts by combining other suitcases or fonts. The Edit button opens a customising window, (see left), in which you can modify your sets by adding or removing fonts.

Unlike the other other programs already mentioned Master Juggler is unique in that it organises font sets so that you can manipulate and move them at the Finder level. When you open fonts using Master Juggler you can open either an individual font family or an entire set of grouped selected fonts.

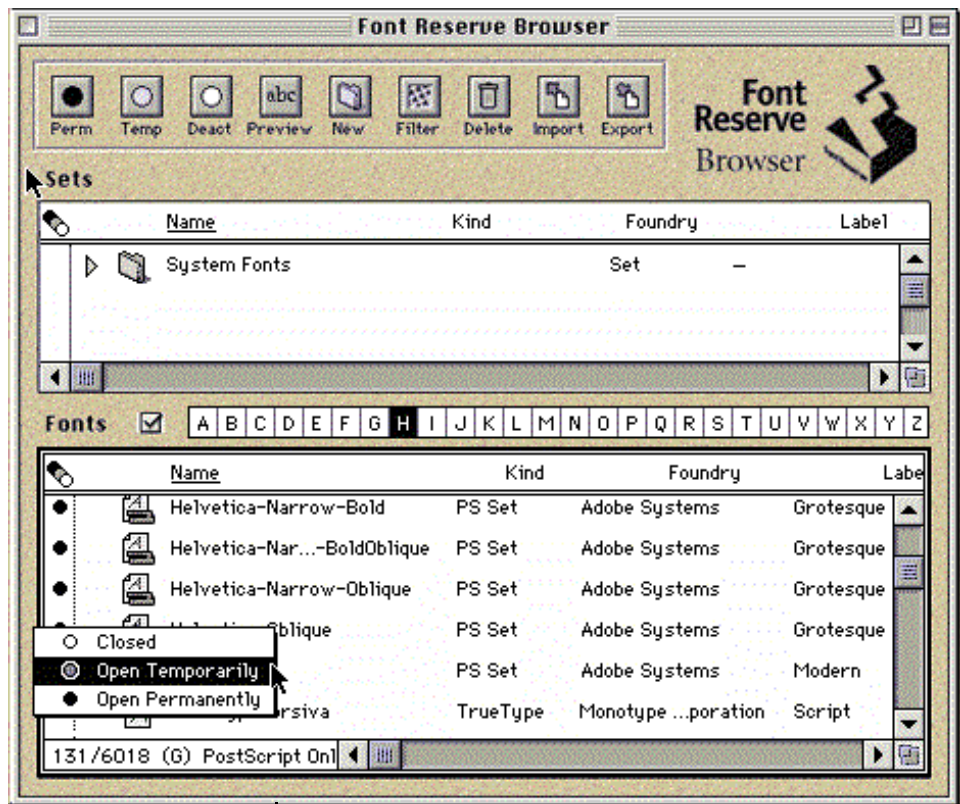




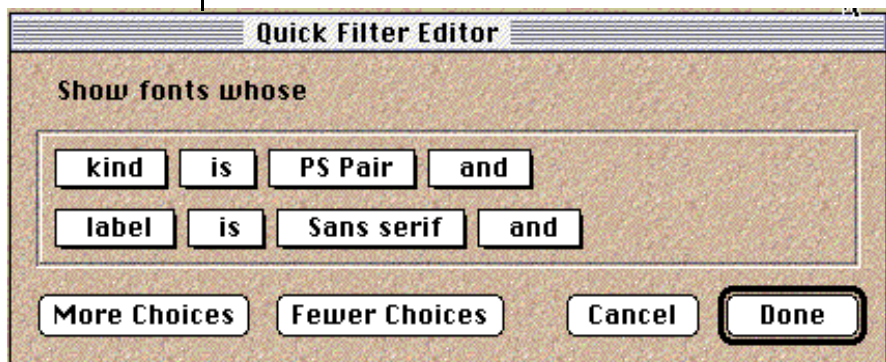
FontReserve*

Finally, an intelligent approach to font management that allows complete flexibility in organising, maintaining and using your fonts. Unlike existing font managers that still require users to manage physical font files, Font Reserve takes complete control of fonts and provides an intelligent, flexible and easy-to-use browser interface. No longer are your fonts constrained by "suitcases" -- Font Reserve looks inside each suitcase, letting you work with your fonts without any artificial barriers. With a single drag-and-drop operation, Font Reserve pre-processes all of the fonts in your system, extracts complete font information and organises them in a database so you never have to touch your physical font files again. Features and Benefits

- o View all fonts with a "Finder-like" listing including foundry, type, version, family, label, etc. Clearly differentiate between all types of fonts, including Font Reserve's PS Pairs (both outline and screen), Postscript Outline (outline only), Bitmap (screen only), TrueType, Multiple Master, GX fonts and Type 3.
- o Organise fonts by name, type, foundry, label, or family.
- o Search for fonts by virtually unlimited criteria, all user definable. Create custom font classes by job, client, or any other user-definable method.
- o Group fonts by family collapsing font families into a single listing.
- o Command-click Instant Previews of fonts showing font name in actual typeface.
- o Generate complete font previews including multiple sizes,



text samples with user definable varied point size, paragraph samples with leading and point size control to see the type "colour", complete character set and keyboard layout map with point size control and complete kerning information. Display previews of multiple fonts at the same time. Display detailed information including font names, font version number and FONT ID. . Fonts can be searched for with a Find utility that cross-references fonts with information about



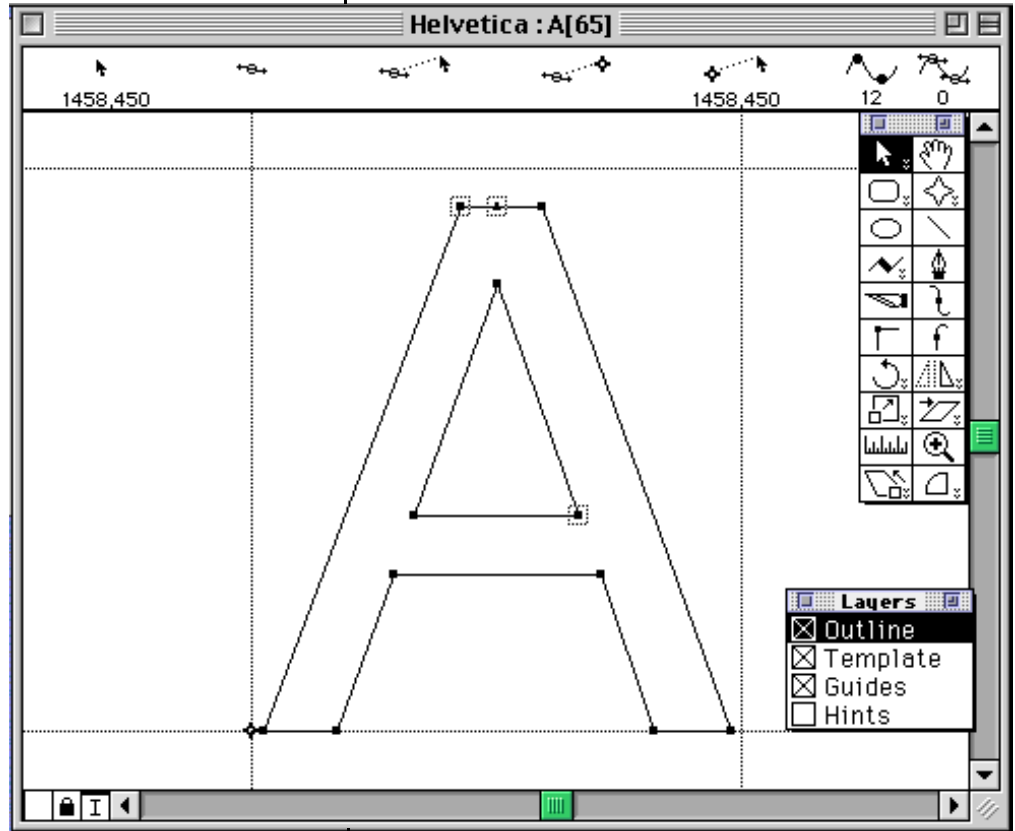
which application they are used with and which project they were used in.

*Because this program is PPC-only I relied heavily on www.fontreserve.com for this information.

Fontographer 4.1

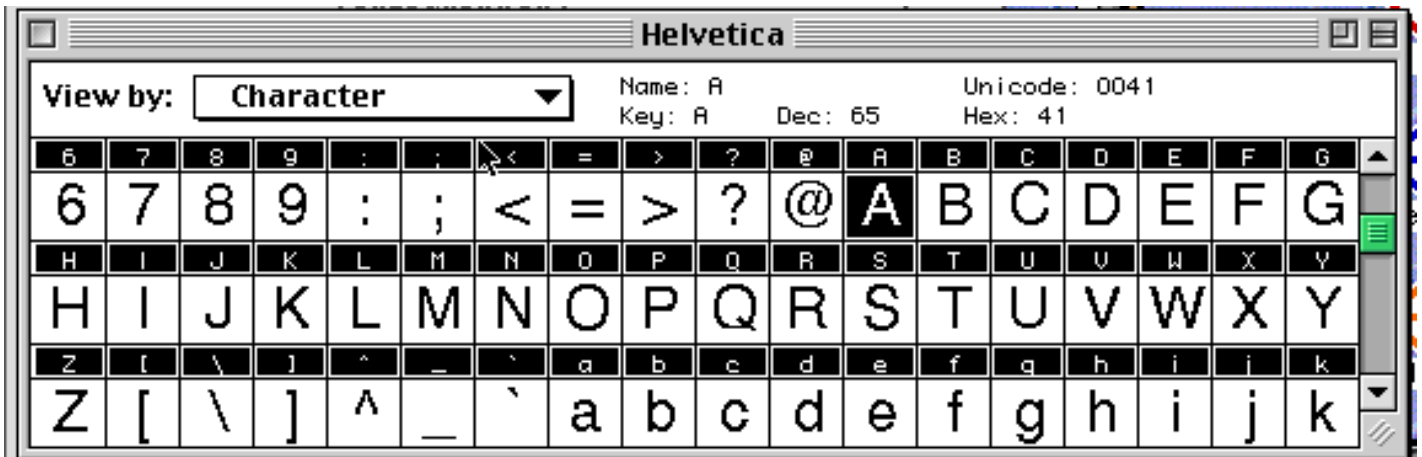
An integral part of any complete software collection, Fontographer generates PostScript-language Type 1 fonts, Type 3, TrueType, and Multiple Master fonts for use on the Macintosh, Windows, NeXT, and Solaris platforms. You can also export EPS and PICT files for use in your favourite drawing programs. With a little creativity, a lot of patience and Macromedia's Fontographer you can be independent of font sellers by designing your own fonts. There are several ways to do this. You can import a font that you use, like Geneva or Helvetica into Fontographer, as below, and then stretch, twist or mutate it with the tools found in the program into something squat, ugly, and definitely your own or you can create a font from scratch by taking the much more time-consuming method of drawing each numeral, piece of punctuation and letter in the Fontographer Outline window. If you feel more comfortable in your own drawing program you can even design your alphabet in Freehand

or in Illustrator and then import it into Fontographer 4.1. Another source of print can be something you or anyone else has drawn on paper and then scanned into Photoshop. This can be done easily if the scan is blown up to make each letter at least an inch and a half or two inch-



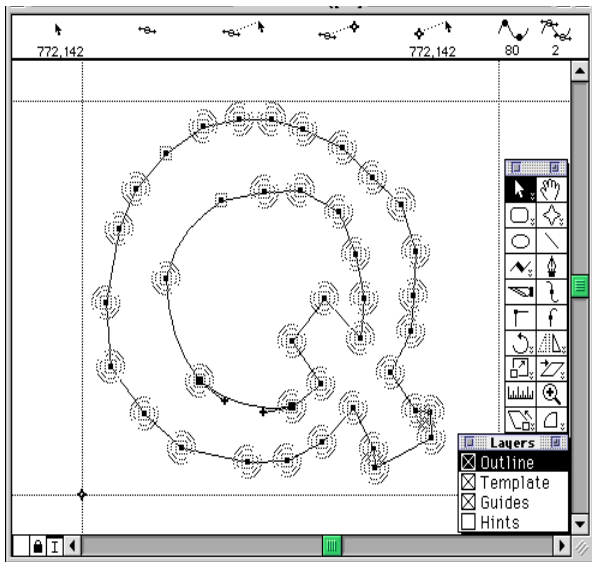
es high and each letter saved as an individual PICT file.

Basically the Fontographer program runs in two windows. The large grid, below, is called the Font Window, where the entire list of characters in the

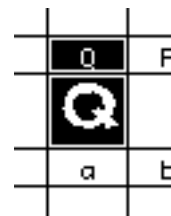


font can be viewed in 12 different ways, the default being 24 point bitmap. Whenever you create a new font or open and rework an established one this window will appear. The second window is the Outline Window. This is where you will do all of your design work and there is one of these for each letter, symbol and number in the font. There will be dozens of these for each font with upper and lower case letters and all the symbols that appear on the extended keyboard. A truly crude font can be designed from scratch in a few seconds per character, as I have done, below, for this article. Unfortunately the lack of time taken shows in every character. In the Font Window, at the bottom of this page, only the numerals and upper & lower case letters are showing but the window, if expanded, is capable of many more characters if I want to

include them in this font. (If you can read this article then I have successfully resisted the urge to finish this font and use it for this issue of the Double Click.) Each letter was created in thirty seconds or less using just one of the drawing tools in the Outline Window pallet. The next letter to be created and added to the Font Window is the "Q", on display in the "Q" Outline Window, below, left. You can see what a quick study I am. The Outline Window and Tool Pallets are shown at only about one-quarter actual size so you can see how it is possible to do fine work on each letter. The position indicators in the upper part of the Outline Window show how far your cursor is from the dotted bass lines in the Outline Window. The letter designed below appears as the small "Q" below, when its folded back into the Font Window.

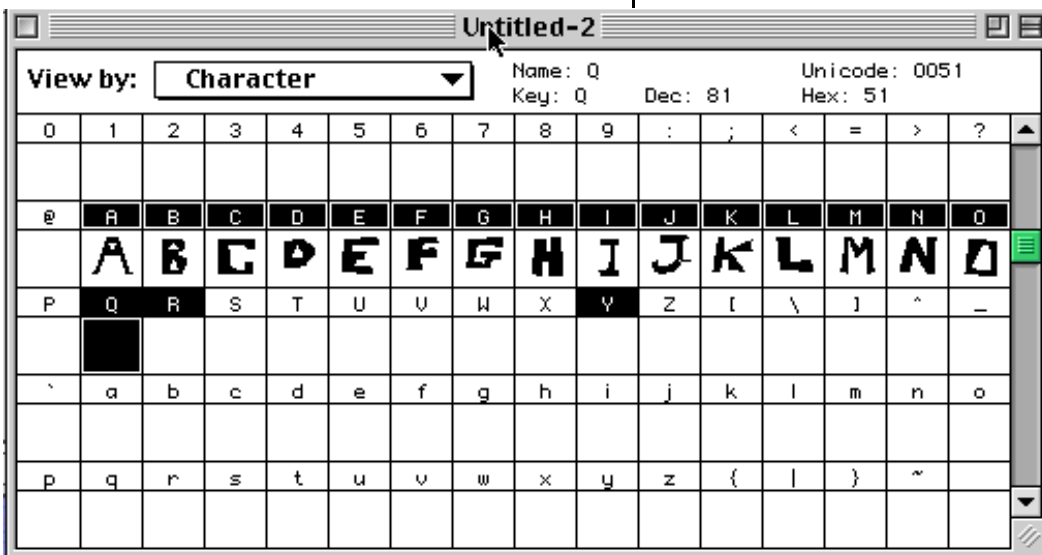


The tools available in the Outline Window can scale, rotate, reverse, shear, twist, stretch, bend and re-orient any feature brought into the window, whether hand-draw in Fontographer scanned, imported from another drawing program or imported from your Fonts Folder as a bona-fide purchased TrueType or PostScript font. Fontographer has all the tools needed to



create, scale, and edit fonts you can create yourself using any means you can think of for getting the image of each character into your Mac. With the rotating and reversing tools you can even take any font and turn it into a mirror image of itself so it can be

typed backwards and only read normally when held up to a mirror.



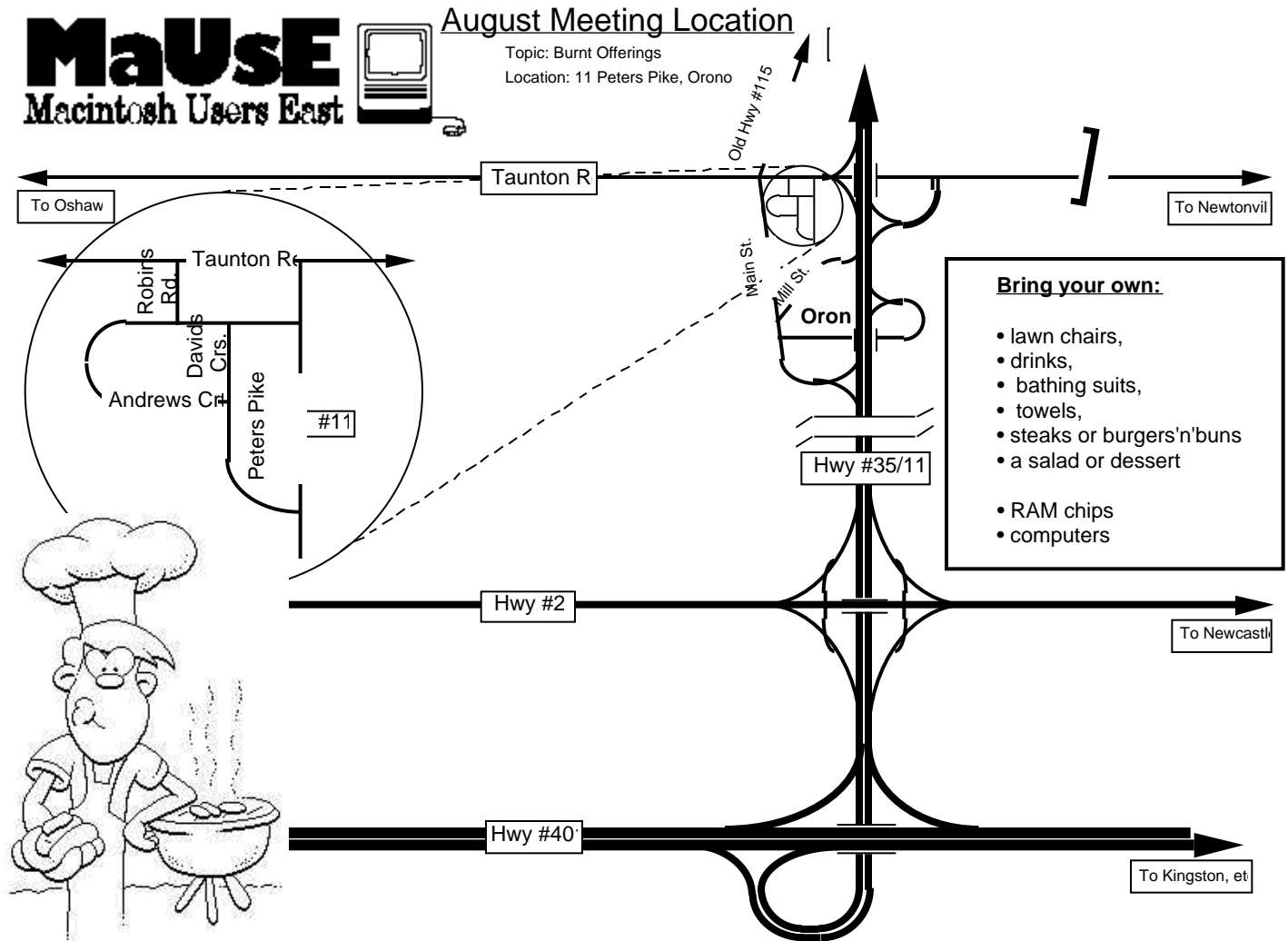
Spacing and kerning can be autoset by the program (recommended) or done by the creator one digit at a time.

When all the design work is done select Generate Font Files from the File menu and choose the Easy mode. Select Macintosh as the Computer for the font and pick a format, TrueType or PostScript, and some bitmap sizes you are likely to use, like 8, 12, and 14.

With Fontographer 4.1 you can make a "character" out of your own scanned signature and use it to

give the documents you create a personal touch when you print them. You can create your own logos and import them into Fontographer or create a picture-based font made up of your own hand drawn doodles, or of scanned Postage Stamps.

I have been keeping a lookout for this early version of the program on the Software auction on eBay. Later versions are, unfortunately, PPC only.



Cameron Pool Party & BBQ
Saturday August 21st
From 3:30 P.M.

